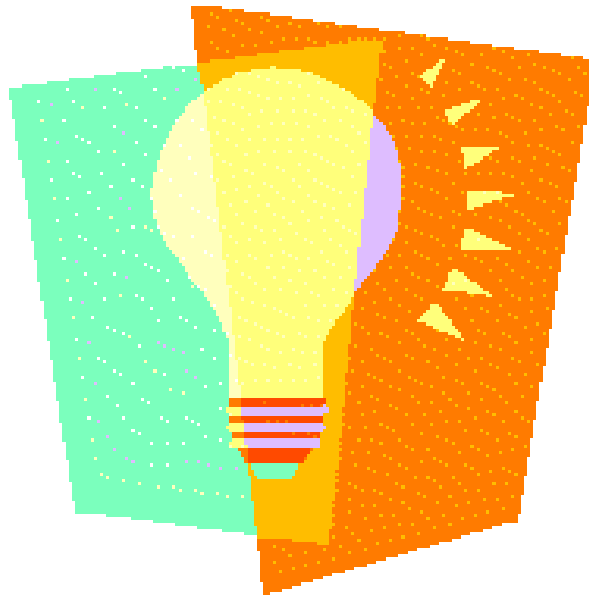


# The Schoolwide Enrichment Model (SEM) Overview



# Curriculum Enhancement:

Teachers are given the tools and flexibility to enhance their classroom activities. This allows them to focus on each child's individual interests, learning styles, and skill sets. The teachers evaluate the curriculum to ensure it is taught efficiently and without redundancy while continuing to incorporate the elements required by the Texas Essential Knowledge and Skills (TEKS).

# What this looks like at LME:

- How teachers plan their units.
- Pre and post tests.
- Small group instruction.
- Special speakers.
- Special days.
- Student choice in classroom.
- Guided reading.
- Learning stations.
- Response to Intervention.
- Enrichment lessons in classroom.

# Renzulli Learning System: (RLS)

A computer-based resource and learning tool designed to put students in touch with engaging, individualized resources, and activities specially chosen for their individual interest areas and learning styles. Renzulli can be used at school and at home year round.

# What this looks like at LME:

- Teachers use of profiles.
- Students understanding of strengths and learning styles.
- Student use of enrichment resources.
- Teacher created projects and assignments.
- Renzulli created projects and assignments.
- Teacher resources for curriculum enhancement.
- [www.renzullilearning.com](http://www.renzullilearning.com)

# Total Talent Portfolio:

An extensive inventory of your child's academic strengths, talents, and interests that is updated annually and shared with the parent, child, and teachers throughout their education at LME.

# What that looks like at LME:

- Blue folder.
- Interest surveys from every year.
- Updated Renzulli profiles from every year.
- Inventory of enrichment clusters, e-slot activities and independent research projects.
- Any other important information that relates to child's interests or talents.

# Independent Investigative Method (IIM):

A teaching model used in grades K-5 that guides students through the research process by empowering them to combine the required curriculum with vital research skills, choosing from options for integration of state standards, the length of study, and students' grade, skills, and learning styles.

# What that looks like at LME:

- Agent IIM
- 7 Foot steps - Topic, Goal Setting, Research (notefacts), Organization, Goal Evaluation, Product, Presentation
- Whole class, small group and individual
- Learning styles and expression styles used in IIM.
- Can be used K-12
- [www.iimresearch.com/](http://www.iimresearch.com/)

# Enrichment Clusters:

Enrichment Clusters provide our students the opportunity to pursue a personal interest in a small group setting and to use them and produce group projects to explore real world applications of the knowledge they are learning in school. Enrichment clusters are non-graded groups of students who share common interests and who come together once a week to explore these interests during a 6-8 week time frame once a year.

# What this looks like at LME:

- 8 weeks for 2<sup>nd</sup>-5<sup>th</sup> grade.
- 6 weeks for K and 1<sup>st</sup> grade.
- Enrichment cluster topics based on interest surveys from beginning of year.
- Small groups made up of students with same interests.
- Student choice.
- Student driven, teacher is the facilitator.

# E-slots:

When students are not participating in an Enrichment Cluster they are taking part in weekly E-slots (Enrichment Slots). The E-slot is a time when students participate in enrichment activities that range from service projects to student chosen electives to individual research projects based on the students' interests and talents.

# What this looks like at LME:

- . Based on students' interests.
- . Whole class, small groups, individual.
- . Looks different class to class, grade level to grade level.
- . Another chance to explore what students are interested in.
- . Students sharing talents or interests.
- . Parents sharing talents or interests.
- . Short term or long term.
- . E-slot electives.
- . Service projects.
- . Can be related to curriculum.

# Overall Value

- Fundamentals stressed as foundation of education.
- Unique opportunity for students to explore interests, advance knowledge, increase self-esteem, connect with community, gain self-awareness and understanding of world.
- Variety of resources and tools to understand and motivate students.
- Endless learning opportunities.